

## Test Report

Model: MGL-V-532A-5W-FE51712

Test items	Test data	Remark
Central wavelength	532.06nm	Figure 1
Output Power	5.237W	Figure 2
Output power stability	0.695%	Figure 2
Transverse mode	TEM <sub>00</sub>	Figure 3
Beam diameter(1/e <sup>2</sup> )	X:1.628mm Y:1.549mm	Figure 3
Beam divergence (full angle)	~0.9mrad	/
M <sup>2</sup>	X:1.06/Y:1.09	Figure 4
Polarization ratio	>100:1(水平)	/
P-I	/	Figure 5
Threshold current	1.44A	/
Operation Mode	CW	/
cooling method	风冷	/
Preheat time	<10mins	/
Power consumption	129W@25°C	/
Operating temperature	10~35°C	/
Idemitsu Altitude	85mm	Figure 6
Laser head size	270×140×112mm <sup>3</sup>	Figure 6
Laser head weight	4.65kg	Figure 6
power supply	100-240VAC	/
Power supply model	PSU-H-LED	Figure 7
Power supply size	276.4×145×106mm <sup>3</sup>	Figure 7
Power supply weight	2.5kg	Figure 7
Power Mode	/	The power supply value is current, unit A
Modulation	TTL/Analog	/

**Inspector: T02**

**Date:2024-6-13**

## Remark

Figure 1. Central wavelength

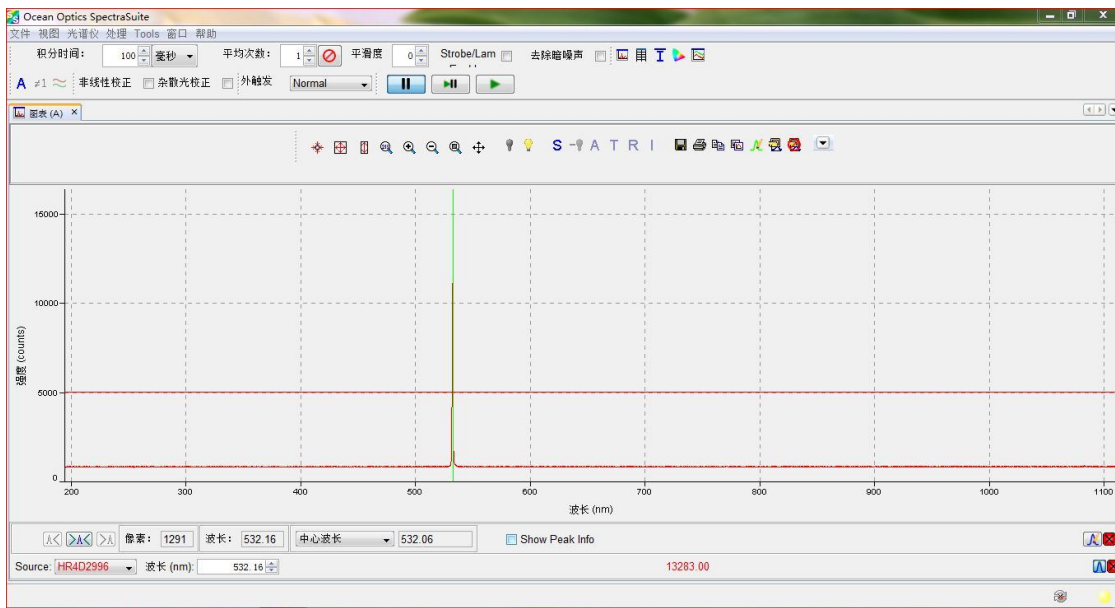
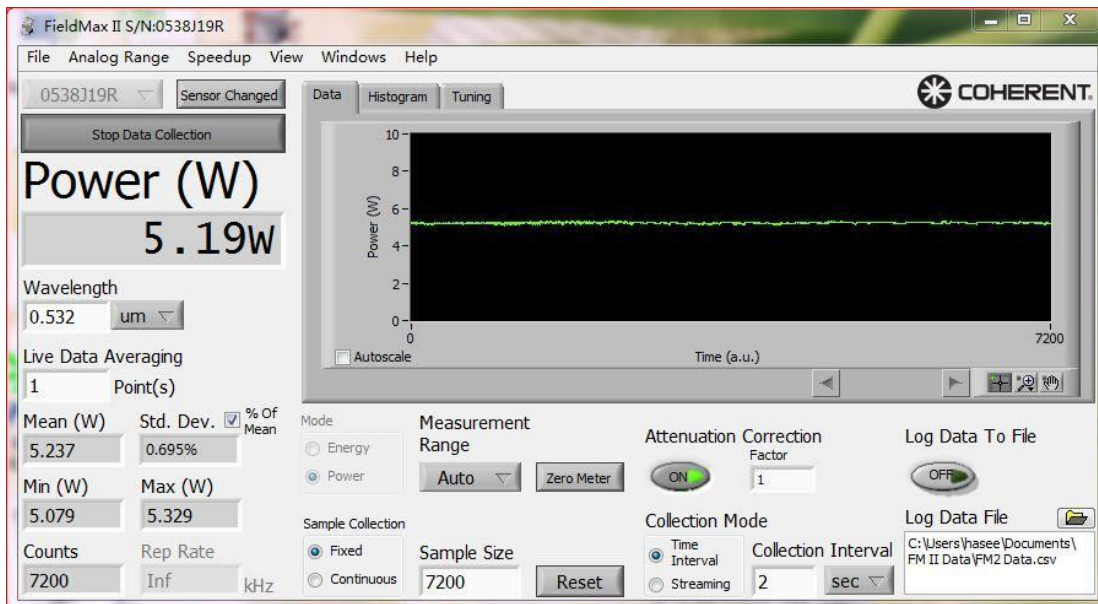
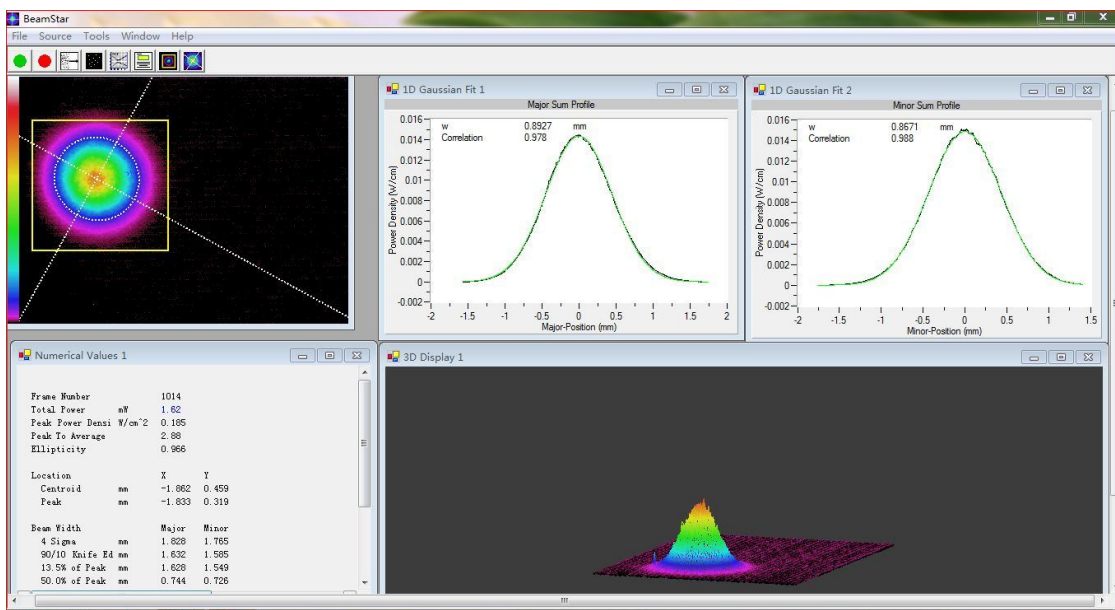


Figure 2. Detection of output power and power stability after optical fiber



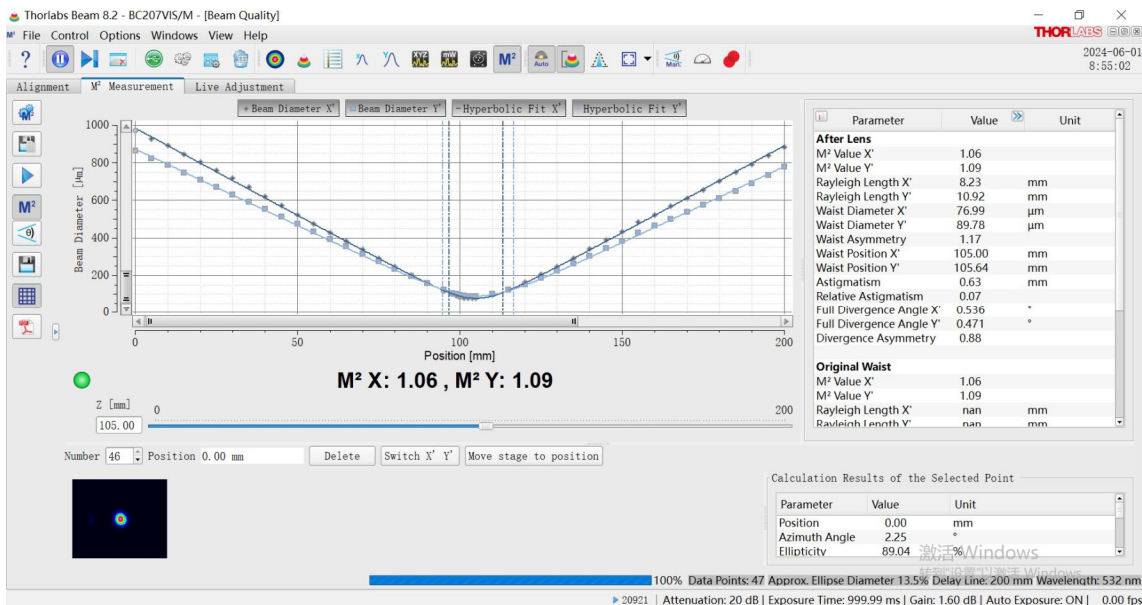
**Coherent Power Meters Monitor Power and Power Stability**

Figure 3. Beam profile detection

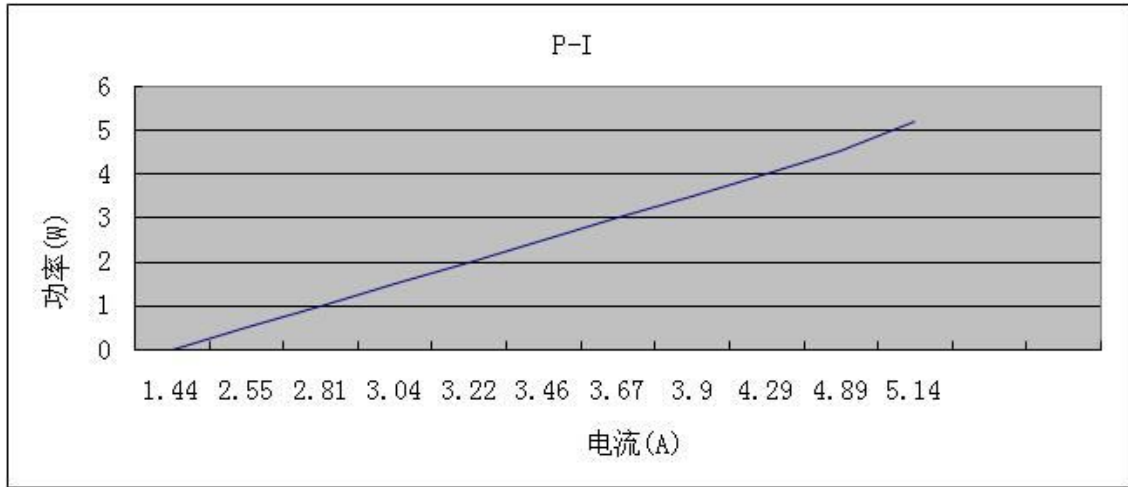


CCD camera detects beam profile

Figure 4. M<sup>2</sup>

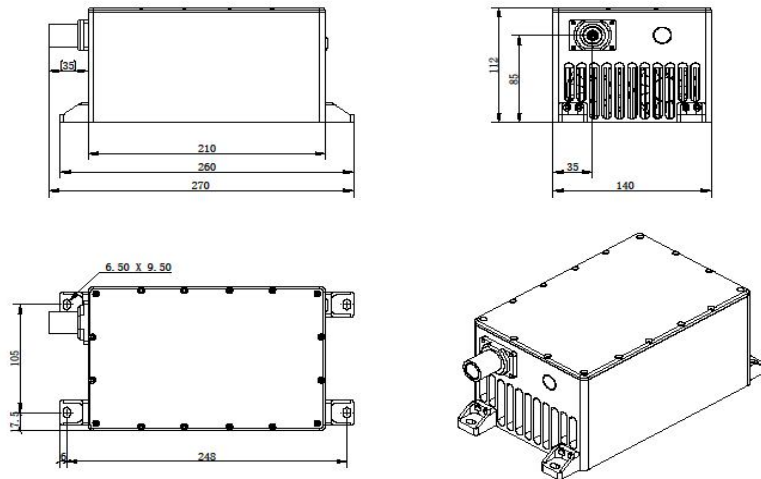


**Figure 5. P-I**



<b>Power(W)</b>	<b>0</b>	<b>0.5</b>	<b>1.0</b>	<b>1.5</b>	<b>2.0</b>	<b>2.5</b>	<b>3.0</b>	<b>3.5</b>	<b>4.0</b>	<b>4.5</b>	<b>5.19</b>
<b>Current(A)</b>	<b>1.44</b>	<b>2.55</b>	<b>2.81</b>	<b>3.04</b>	<b>3.22</b>	<b>3.46</b>	<b>3.67</b>	<b>3.9</b>	<b>4.29</b>	<b>4.89</b>	<b>5.14</b>

**Figure 6. Laser head**



**Figure 7. Power supply**

